

# GRABBER OA

## ON/OFF ROAD ALL-POSITION



LEARN MORE



**ON/OFF ROAD, ALL-POSITION TIRE**  
DESIGNED TO REDUCE DAMAGE  
FROM CURBING, CUTS AND  
ABRASIONS MEANS YOU CAN BE  
CONFIDENT EITHER ON OR OFF THE  
HIGHWAY.

**BUILT ON**  
**PROVEN**  
**PERFORMANCE**



**GENERAL TIRE**

[WWW.GENERALTIRETRUCK.COM](http://WWW.GENERALTIRETRUCK.COM)

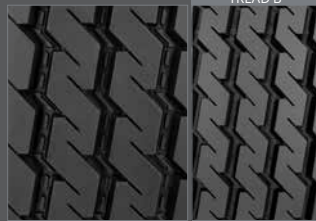
# GRABBER OA

## ON/OFF ROAD ALL-POSITION



### ADVANCED CUT/CHIP

23/32" tread depth and cut / chip resistant tread compound deliver optimal mileage.



### PATENTED INNOVATIVE GROOVE TECHNOLOGY

Patented innovative groove technology leads to minimum stone retention, extending casing life.



### REINFORCED DAMAGE-REDUCING SIDEWALL

Reinforced sidewall reduces damage from curbing, cuts and abrasions.



### EXCEPTIONAL HANDLING ON ALL SURFACES

Very good handling characteristics on all surfaces.

**APPLICATIONS:** Construction Service, On/Off Highway, All-Position

TIRE SIZE	LOAD RANGE	ARTICLE NUMBER	TREAD DEPTH (32nds)	MAX. SPEED MPH #	STATIC LOADED RADIUS IN (mm)	OVERALL INFLATED DIAMETER IN (mm)	OVERALL INFLATED WIDTH IN (mm)	LOADED SECTION WIDTH IN (mm)	APPROVED RIMS	MIN. DUAL SPACING IN (mm)	REVS. PER MILE (km)	TIRE WEIGHT LB (kg)	MAX LOAD@INFLATION			
													SINGLE LB (kg)	SINGLE PSI (KPa)	DUAL LB (kg)	DUAL PSI (KPa)
TUBELESS TIRES ON 15 DEGREE DROP CENTER RIMS																
11R22.5	H	05151600000	23	68	19.5 (495)	41.7 (1058)	11.1 (281)	12.2 (309)	8.25, 7.50	12.5 (318)	497 (309)	123 (56)	6610 120 (3000 830)	6005 120 (2725 830)		
11R24.5	H	05151590000	23	68	20.6 (523)	43.8 (1113)	11.1 (282)	12.2 (310)	8.25, 7.50	12.5 (318)	473 (294)	131 (59)	7160 120 (3250 830)	6610 120 (3000 830)		
315/80R22.5 (Tread B)	L	05350150000	24	68	19.9 (505)	42.8 (1088)	12.5 (317)	14.0 (356)	9.00, 8.25	13.8 (351)	484 (301)	150 (68)	9090 130 (4125 900)	8270 130 (3750 900)		

Note - Rim listed first is the measuring rim. Minimum Dual Spacing calculated without chains. + - Tread pattern varies (5 rib design) # - Exceeding the lawful speed limit is neither recommended nor endorsed. Overall widths will change 0.1 inch (2.5 mm) for each 1/4 inch change in rim width. Minimum dual spacing should be adjusted accordingly. 315/80R22.5 tires used on 8.25" rims are restricted to a maximum of 7610 lbs at 120 psi. Continental Tire the Americas, LLC. reserves the right to change product specifications at any time without notice or obligations. Please consult rim manufacturers load and inflation limits. Never exceed rim manufacturers limits without permission of component manufacturer.