

# GENERAL HD

## HIGHWAY DRIVE



### LONG HAUL DRIVE TIRE

THIS ENHANCED CLOSED SHOULDER DRIVE TIRE DELIVERS EXCELLENT MILEAGE WHILE BALANCING OPTIMAL TRACTION AND FUEL ECONOMY.

**BUILT ON  
PROVEN  
PERFORMANCE**



**GENERAL TIRE**

[WWW.GENERALTIRETRUCK.COM](http://WWW.GENERALTIRETRUCK.COM)

# GENERAL HD

## HIGHWAY DRIVE



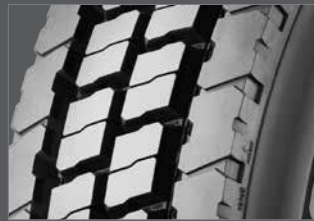
### SOLID SHOULDER TREAD DESIGN

Closed shoulder tread design with very high void percentage delivers exceptional traction while providing proven removal mileage.



### TREAD BLOCK DESIGN FOR HIGH MILEAGE AND TRACTION

Proven tread block geometry promotes stiffness in the footprint, leading to high mileage while reducing heat for low rolling resistance.



### INTEGRATED STONE EJECTION SYSTEM

Groove bottom ejection system reduces stone retention and casing penetration leading to higher retreadability.



### LOW ROLLING RESISTANCE

Tread compound reduces cost by optimizing fuel consumption.

**APPLICATIONS:** Long or short-haul, highway tandem drive axle

TIRE SIZE	LOAD RANGE	ARTICLE NUMBER	TREAD DEPTH (32nds)	MAX. SPEED MPH #	STATIC LOADED RADIUS IN (mm)	OVERALL INFLATED DIAMETER IN (mm)	OVERALL INFLATED WIDTH IN (mm)	LOADED SECTION WIDTH IN (mm)	APPROVED RIMS	MIN. DUAL SPACING IN (mm)	REVS. PER MILE (km)	TIRE WEIGHT LB (kg)	MAX LOAD@INFLATION			
													SINGLE LB (kg)	SINGLE PSI (kPa)	DUAL LB (kg)	DUAL PSI (kPa)
TUBELESS TIRES ON 15 DEGREE DROP CENTER RIMS																
11R22.5	G	05210950000	30	75	19.6 (498)	42.1 (1069)	11.1 (282)	12.3 (312)	8.25, 7.50	12.5 (318)	492 (306)	123 (55)	6175 105 (2800 720)	5840 105 (2650 720)		
11R22.5	H	05210960000	30	75	19.6 (498)	42.1 (1069)	11.1 (282)	12.3 (312)	8.25, 7.50	12.5 (318)	492 (306)	124 (56)	6610 120 (3000 830)	6005 120 (2725 830)		
295/75R22.5	G	05211000000	30	75	19.1 (485)	40.9 (1039)	10.9 (277)	12.0 (305)	8.25, 9.00	12.5 (318)	506 (314)	118 (53)	6175 110 (2800 760)	5675 110 (2575 760)		
11R24.5	G	05210970000	30	75	20.6 (523)	44.1 (1120)	11.1 (282)	12.3 (312)	8.25, 7.50	12.5 (318)	469 (292)	131 (59)	6610 105 (3000 720)	6005 105 (2725 720)		
11R24.5	H	05210980000	30	75	20.6 (523)	44.1 (1120)	11.1 (282)	12.3 (312)	8.25, 7.50	12.5 (318)	469 (292)	133 (60)	7160 120 (3250 830)	6610 120 (3000 830)		
285/75R24.5	G	05210990000	30	75	19.7 (500)	42.1 (1069)	10.8 (274)	11.9 (302)	8.25	12.5 (318)	492 (306)	123 (56)	6175 110 (2800 760)	5675 110 (2575 760)		

Note - Rim listed first is the measuring rim. Minimum Dual Spacing calculated without chains. # - Exceeding the lawful speed limit is neither recommended nor endorsed. Overall widths will change 0.1 inch (2.5 mm) for each 1/4 inch change in rim width. Minimum dual spacing should be adjusted accordingly. Continental Tire the Americas, LLC reserves the right to change product specifications at any time without notice or obligations. Please consult rim manufacturers load and inflation limits. Never exceed rim manufacturers limits without permission of component manufacturer.