

# GENERAL HS

## HIGHWAY STEER



LEARN MORE



**NEW HIGHWAY STEER TIRE**  
ENHANCED TREAD DESIGN AND  
CASING PLATFORM UTILIZES  
PROVEN TECHNOLOGY TO DELIVER  
EXCELLENT MILEAGE, EVEN WEAR  
AND LOW ROLLING RESISTANCE.

**100 YEARS OF**  
**RELIABILITY**

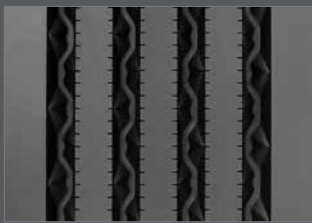


**GENERALTIRE**

[WWW.GENERALTIRETRUCK.COM](http://WWW.GENERALTIRETRUCK.COM)

# GENERAL HS

## HIGHWAY STEER



### ENHANCED TREAD PATTERN

5 rib tread pattern, wider ribs and more tread volume promote even wear and high removal mileage.



### INTEGRATED STONE EJECTION SYSTEM

Advanced pyramid shaped stone ejection system prevents stone retention.



### LOW ROLLING RESISTANCE COMPOUNDS

Low rolling resistance tread compound delivers high level of fuel efficiency.



### REINFORCED CASING FOR INCREASED DURABILITY

Enhanced bead to belt package increases casing durability for maximum retreadability.

**APPLICATIONS:** Long-Haul, Over the Highway All-Position Radial Designed for the Steer Position

TIRE SIZE	LOAD RANGE	ARTICLE NUMBER	TREAD DEPTH (32nds)	MAX. SPEED MPH #	STATIC LOADED RADIUS IN (mm)	OVERALL INFLATED DIAMETER IN (mm)	OVERALL INFLATED WIDTH IN (mm)	LOADED SECTION WIDTH IN (mm)	APPROVED RIMS	MIN. DUAL SPACING IN (mm)	REVS. PER MILE (km)	TIRE WEIGHT LB (kg)	MAX LOAD@INFLATION			
													SINGLE LB (kg)	SINGLE PSI (kPa)	DUAL LB (kg)	DUAL PSI (kPa)
TUBELESS TIRES ON 15 DEGREE DROP CENTER RIMS																
11R22.5	H	05111220000	18	75	19.4 (493)	41.3 (1049)	11.0 (279)	12.2 (310)	8.25, 7.50	12.5 (318)	500 (311)	116 (53)	6610 120 (3000 830)	6005 120 (2725 830)		
295/75R22.5	H	05111250000	18	75	18.7 (475)	40.1 (1019)	11.0 (279)	12.2 (310)	8.25, 9.00	12.5 (318)	516 (321)	106 (51)	6940 120 (3150 830)	6175 120 (2800 830)		
11R24.5	H	05111230000	18	75	20.4 (518)	43.4 (1102)	11.0 (279)	12.2 (310)	8.25, 7.50	12.5 (318)	477 (296)	122 (56)	7160 120 (3250 830)	6610 120 (3000 830)		
285/75R24.5	H	05111240000	18	75	19.3 (490)	41.3 (1050)	11.2 (285.0)	12.0 (305.0)	8.25	12.5 (318)	501 (311)	112 (51)	6780 120 (3075 830)	6175 120 (2800 830)		

Minimum Dual Spacing calculated without chains. # - Exceeding the lawful speed limit is neither recommended nor endorsed. Overall widths will change 0.1 inch (2.5 mm) for each 1/4 inch change in rim width. Minimum dual spacing should be adjusted accordingly. Continental Tire the Americas, LLC. reserves the right to change product specifications at any time without notice or obligations. Please consult rim manufacturers load and inflation limits. Never exceed rim manufacturers limits without permission of component manufacturer.