

# GENERAL HT

## HIGHWAY TRAILER



LEARN MORE



**NEW LONG HAUL TRAILER TIRE**  
THIS SOLID SHOULDER TRAILER  
TIRE OFFERS STONE EJECTION  
TECHNOLOGIES AS WELL AS  
INCREASED DURABILITY , LOW  
ROLLING RESISTANCE AND A WIDER  
CASING PLATFORM.

**100 YEARS OF  
RELIABILITY**

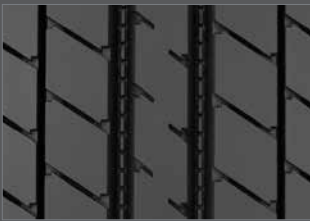


**GENERAL TIRE**

[WWW.GENERALTIRETRUCK.COM](http://WWW.GENERALTIRETRUCK.COM)

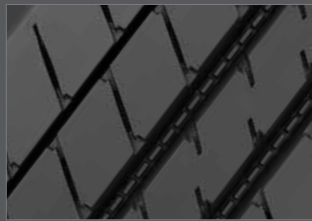
# GENERAL HT

## HIGHWAY TRAILER



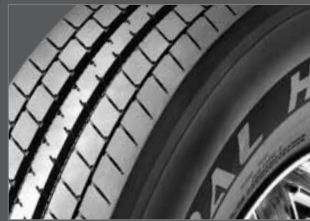
### IMPROVED PERFORMANCE TREAD PATTERN

New tread design provides proven fuel economy and performance in a demanding application.



### INNOVATIVE STONE REPELLENT TREAD PATTERN

Patented groove technology leads to minimum stone retention and extended casing life.



### REINFORCED DAMAGE-REDUCING SIDEWALL

Scruff ribs protect sidewall from curbing and cutting.



### LOW ROLLING RESISTANCE

Tread compound reduces cost by optimizing fuel consumption.

### APPLICATIONS: Long-Haul, Highway Trailer Axle

TIRE SIZE	LOAD RANGE	ARTICLE NUMBER	TREAD DEPTH (32nds)	MAX. SPEED MPH #	STATIC LOADED RADIUS IN (mm)	OVERALL INFLATED DIAMETER IN (mm)	OVERALL INFLATED WIDTH IN (mm)	LOADED SECTION WIDTH IN (mm)	APPROVED RIMS	MIN. DUAL SPACING IN (mm)	REVS. PER MILE (km)	TIRE WEIGHT LB (kg)	MAX LOAD@INFLATION			
													SINGLE LB (kg)	SINGLE PSI (KPa)	DUAL LB (kg)	DUAL PSI (KPa)
TUBELESS TIRES ON 15 DEGREE DROP CENTER RIMS																
11R22.5	G	05310400000	13	75	19.3 (490)	41.1 (1044)	11.1 (282)	12.2 (310)	8.25, 7.50	12.5 (318)	504 (313)	105 (48)	6175 105 (2800 720)	5840 105 (2650 720)		
255/70R22.5	H	05310420000	18	75	17.1 (434)	36.6 (929)	9.9 (251)	10.8 (274)	7.50, 8.25	11.3 (287)	566 (352)	91 (41)	5510 120 (2500 830)	5070 120 (2300 830)		
295/75R22.5	G	05310440000	13	75	18.5 (470)	39.8 (1011)	10.9 (277)	12.0 (305)	8.25, 7.50	12.5 (318)	520 (323)	100 (45)	6175 110 (2800 760)	5675 110 (2575 760)		
11R24.5	G	05310410000	13	75	20.2 (513)	43.0 (1092)	11.1 (282)	12.2 (310)	8.25, 7.50	12.5 (318)	481 (299)	113 (51)	6610 105 (3000 720)	6005 105 (2725 720)		
285/75R24.5	G	05310430000	13	75	19.1 (485)	41.1 (1041)	10.9 (277)	12.0 (305)	8.25	12.5 (318)	505 (314)	106 (48)	6175 110 (2800 760)	5675 110 (2575 760)		

Minimum Dual Spacing calculated without chains. # - Exceeding the lawful speed limit is neither recommended nor endorsed. Overall widths will change 0.1 inch (2.5 mm) for each 1/4 inch change in rim width. Minimum dual spacing should be adjusted accordingly. Continental Tire the Americas, LLC. reserves the right to change product specifications at any time without notice or obligations. Please consult rim manufacturers load and inflation limits. Never exceed rim manufacturers limits without permission of component manufacturer.