

# GENERAL RD REGIONAL DRIVE



LEARN MORE



**NEW REGIONAL DRIVE TIRE**  
A TOUGH OPEN SHOULDER  
REGIONAL DRIVE TIRE THAT  
DELIVERS RELIABLE TRACTION AND  
HIGH MILEAGE WITH A COMPOUND  
RESISTANT TO CUTS AND TEARS.

**BUILT ON  
PROVEN  
PERFORMANCE**

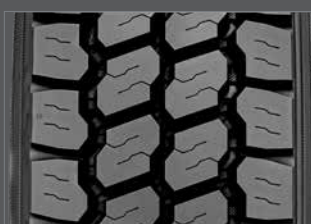


**GENERALTIRE**

WWW.GENERALTIRETRUCK.COM

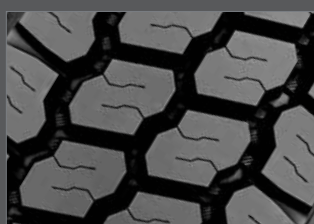
# GENERAL RD

## REGIONAL DRIVE



### PROVEN TREAD PERFORMANCE

High void and proven tread block geometry deliver traction performance and long removal mileage.



### INNOVATIVE STONE REPELLENT TREAD PATTERN

Open shoulder tread design provides traction in severe conditions and is resistant to irregular wear.



### REINFORCED, TOUGH, DAMAGE-REDUCING SIDEWALL

Enhanced bead package and tough, durable sidewall provide high retreadability.



### RESILIENT TREAD COMPOUND

Tread compound balances reliable high mileage on highway with the durability needed for more severe conditions.

**APPLICATIONS:** Long and short-haul, highway, single and tandem drive axle

TIRE SIZE	LOAD RANGE	ARTICLE NUMBER	TREAD DEPTH (32nds)	MAX. SPEED MPH #	STATIC LOADED RADIUS IN (mm)	OVERALL INFLATED DIAMETER IN (mm)	OVERALL INFLATED WIDTH IN (mm)	LOADED SECTION WIDTH IN (mm)	APPROVED RIMS	MIN. DUAL SPACING IN (mm)	REVS. PER MILE (km)	TIRE WEIGHT LB (kg)	MAX LOAD@INFLATION			
													SINGLE LB (kg)	SINGLE PSI (kPa)	DUAL LB (kg)	DUAL PSI (kPa)
TUBELESS TIRES ON 15 DEGREE DROP CENTER RIMS																
11R22.5	G	05211030000	28	75	19.5 (495)	41.8 (1062)	11.3 (287)	12.1 (307)	8.25	12.5 (318)	495 (308)	122 (55)	6175 105 (2800 720)	5840 105 (2650 720)		
11R22.5	H	05211040000	28	75	19.5 (495)	41.8 (1062)	11.3 (287)	12.1 (307)	8.25	12.5 (318)	495 (308)	124 (56)	6610 120 (3000 830)	6005 120 (2725 830)		
295/75R22.5	G	05211080000	28	75	18.9 (480)	40.8 (1036)	11.0 (279)	12.2 (310)	8.25	12.5 (318)	509 (315)	116 (52)	6175 110 (2800 760)	5675 110 (2575 760)		
11R24.5	G	05211050000	28	75	20.6 (523)	43.8 (1113)	11.3 (287)	12.2 (310)	8.25	12.5 (318)	472 (293)	131 (59)	6610 105 (3000 720)	6005 105 (2725 720)		
11R24.5	H	05211060000	28	75	20.6 (523)	43.8 (1113)	11.3 (287)	12.2 (310)	8.25	12.5 (318)	472 (293)	133 (60)	7160 120 (3250 830)	6610 120 (3000 830)		
285/75R24.5	G	05211070000	28	75	19.6 (498)	42.0 (1066)	10.7 (272)	12.1 (307)	8.25	12.5 (318)	493 (306)	120 (54)	6175 110 (2800 760)	5675 110 (2575 760)		

Note - Rim listed first is the measuring rim. Minimum Dual Spacing calculated without chains. # - Exceeding the lawful speed limit is neither recommended nor endorsed. Overall widths will change 0.1 inch (2.5 mm) for each 1/4 inch change in rim width. Minimum dual spacing should be adjusted accordingly. Continental Tire the Americas, LLC. reserves the right to change product specifications at any time without notice or obligations. Please consult rim manufacturers load and inflation limits. Never exceed rim manufacturers limits without permission of component manufacturer.