



TRUST BUILT BY THE MILE.

GRABBER OA 2 (WIDE BASE)

CONSTRUCTION SERVICE, ON/OFF HIGHWAY,
ALL-POSITION WIDE BASE

- › SHORT DISTANCE HAULS
- › EXCELLENT TRACTION
- › TOUGH CASING
- › CONSTRUCTION SERVICE



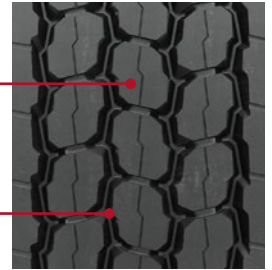
GENERAL TIRE



**CONSTRUCTION SERVICE,
ON/OFF HIGHWAY, ALL-POSITION
WIDE BASE**

**TREAD PATTERN
DELIVERS 21%
BETTER MILEAGE**

**GROOVE TECHNOLOGY
LEADS TO MINIMAL
STONE RETENTION**



GRABBER OA 2 (WIDE BASE)

FEATURES & BENEFITS

21% MILEAGE IMPROVEMENT over previous General Grabber OA Widebase.

PATENTED INNOVATIVE GROOVE TECHNOLOGY leads to minimum stone retention, extending casing life.

Aggressive multi-service, all-position tread pattern **PROVIDES EXCELLENT TRACTION.**



TECHNICAL DATA

TIRE SIZE	LOAD RANGE	ARTICLE NUMBER	TREAD DEPTH (32NDS)	MAX. SPEED (MPH)	STATIC LOADED RADIUS		OVERALL INFLATED DIAMETER		OVERALL INFLATED WIDTH		LOADED SECTION WIDTH		APPROVED RIM(S)	MIN. DUAL SPACING		REVS PER UNIT		TIRE WEIGHT		MAX. LOAD @ INFLATION	
					IN	MM	IN	MM	IN	MM	IN	MM		IN	MM	MI	KM	LBS	KG	SINGLE LBS, PSI (KG, KPA)	DUAL LBS, PSI (KG, KPA)
385/65R22.5	L	05155860000 005654490000	21	68	19.5	495	42	1067	14.7	373	16.2	411	11.75, 12.25	N/A	N/A	493	306	166	75	9920 / 130 (4500 / 900)	N/A
425/65R22.5	L	05155870000 005654450000	24	68	20.4	518	44.5	1130	16.6	422	18.0	457	13.00, 12.25, 14.00	N/A	N/A	465	289	186	84	11,400 / 120 (5150 / 830)	N/A
445/65R22.5	L	05155880000 005654510000	23	68	20.9	531	45.2	1148	17.4	442	18.6	472	13.00, 14.00	N/A	N/A	458	285	208	94	12,800 / 130 (5800 / 900)	N/A

TUBELESS TIRES ON 15 DEGREE DROP CENTER RIMS

*Note - Rim listed first is the measuring rim. ® = Intelligent Tire. Minimum Dual Spacing calculated without chains. # - Exceeding the lawful speed limit is neither recommended nor endorsed. Overall widths will change 0.1 inch (2.5 mm) for each 1/4 inch change in rim width. Minimum dual spacing should be adjusted accordingly. Continental Tire the Americas, LLC. reserves the right to change product specifications at any time without notice or obligations. Please consult rim manufacturer's load and inflation limits. Never exceed rim manufacturer's limits without permission of component manufacturer. *Tires in the Steer axle position are also suitable for trailing axles on trucks and as all-position fitment where traction is not of paramount importance.*

Whether your operation is highway, regional, urban or on/off-road, **you can trust General Tire to deliver commercial truck tires that work as hard as you do.**

GENERALTIRETRUCK.COM