



TRUST BUILT BY THE MILE.

# GENERAL ST250 LP

LONG HAUL AND REGIONAL HAUL, ON/OFF  
HIGHWAY, LOW PLATFORM TRAILER AXLE

- › LONG & SHORT DISTANCE HAULS
- › GREAT HANDLING
- › DURABLE TREAD COMPOUNDS



**GENERAL TIRE**

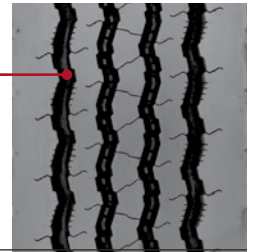
GENERAL TIRE. SINCE 1915

GENERALTIRETRUCK.COM



LONG HAUL AND REGIONAL  
HAUL, ON/OFF HIGHWAY,  
LOW PLATFORM TRAILER AXLE

GROOVES PROVIDE  
ENHANCED WET TRACTION

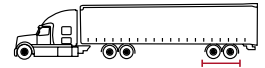


# GENERAL ST250 LP

## FEATURES & BENEFITS

Unique grooves provide water evacuation contributing to **ENHANCED WET TRACTION**.

**PATENTED STONE EJECTION SYSTEM** reduces stone retention and casing penetrations.



## TECHNICAL DATA

TIRE SIZE	LOAD RANGE	ARTICLE NUMBER	TREAD DEPTH (32NDS)	MAX. SPEED (MPH)	STATIC LOADED RADIUS		OVERALL INFLATED DIAMETER		OVERALL INFLATED WIDTH		LOADED SECTION WIDTH	APPROVED RIM(S)	MIN. DUAL SPACING		REVS PER UNIT		TIRE WEIGHT		MAX. LOAD @ INFLATION		
					IN	MM	IN	MM	IN	MM			IN	MM	IN	MM	MI	KM	LBS	KG	SINGLE LBS, PSI (KG, KPA)
255/70R22.5	H	05681130000	16	75	16.9	429	36.5	927	9.8	249	11.0	279	8.25, 7.50	11.3	287	567	352	88	40	5510 / 120 (2500 / 830)	5070 / 120 (2300 / 830)

**TUBELESS TIRES ON 15 DEGREE DROP CENTER RIMS**

Note - Rim listed first is the measuring rim. Minimum Dual Spacing calculated without chains. # - Exceeding the lawful speed limit is neither recommended nor endorsed. Overall widths will change 0.1 inch (2.5 mm) for each 1/4 inch change in rim width. Minimum dual spacing should be adjusted accordingly. Continental Tire the Americas, LLC. reserves the right to change product specifications at any time without notice or obligations. Please consult rim manufacturer's load and inflation limits. Never exceed rim manufacturer's limits without permission of component manufacturer.

Whether your operation is highway, regional, urban or on/off-road, **you can trust General Tire to deliver commercial truck tires that work as hard as you do.**

[GENERALTIRETRUCK.COM](http://GENERALTIRETRUCK.COM)