

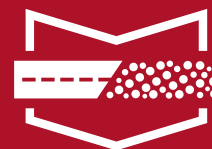


TRUST BUILT BY THE MILE.

# GRABBER OA 2

CONSTRUCTION SERVICE, ON/OFF HIGHWAY,  
ALL-POSITION

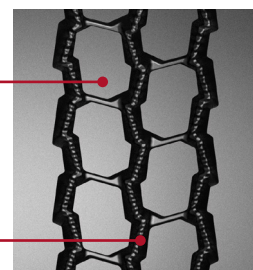
- › SHORT DISTANCE HAULS
- › EXCELLENT TRACTION
- › TOUGH CASING
- › CONSTRUCTION SERVICE



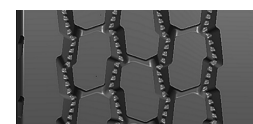
**GENERAL TIRE**



TREAD PATTERN  
DELIVERS 19%  
BETTER MILEAGE



GROOVE TECHNOLOGY LEADS TO  
MINIMAL STONE RETENTION



TREAD B  
(SEE CHART)

## CONSTRUCTION SERVICE, ON/OFF HIGHWAY, ALL-POSITION **GRABBER OA 2**

### FEATURES & BENEFITS

19% MILEAGE IMPROVEMENT over previous General Grabber OA.

Chip- and chunk-resistant tread compound delivers OPTIMAL PERFORMANCE.

PATENTED INNOVATIVE GROOVE TECHNOLOGY leads to minimum stone retention, extending casing life.



### TECHNICAL DATA

TIRE SIZE	LOAD RANGE	ARTICLE NUMBER	TREAD DEPTH (32NDS)	MAX. SPEED (MPH)	STATIC LOADED RADIUS		OVERALL INFLATED DIAMETER		OVERALL INFLATED WIDTH		LOADED SECTION WIDTH		APPROVED RIM(S)	MIN. DUAL SPACING		REVS PER UNIT		TIRE WEIGHT		MAX. LOAD @ INFLATION	
					IN	MM	IN	MM	IN	MM	IN	MM		IN	MM	MI	KM	LBS	KG	SINGLE LBS, PSI (KG, KPA)	DUAL LBS, PSI (KG, KPA)
11R22.5	H	05155810000 005654460000	24	68	19.6	498	41.7	1058	11.2	284	12.2	310	8.25, 7.50	12.5	318	496	308	129	59	6610 / 120 (3000 / 825)	6005 / 120 (2725 / 825)
11R24.5	H	05155850000 005654470000	24	68	20.6	523	43.9	1115	11.2	284	12.2	310	8.25, 750	12.5	318	472	293	138	63	7160 / 120 (3250 / 825)	6610 / 120 (3000 / 825)
315/80R22.5 (TREAD B)	L	05155840000 005654480000	22	68	19.8	503	42.7	1085	12.5	318	13.8	351	9.00, 9.75	13.8	351	485	301	160	73	10200 / 130 (4625 / 900)	9090 / 130 (4125 / 900)

TUBELESS TIRES ON 15 DEGREE DROP CENTER RIMS

Note - Rim listed first is the measuring rim. ® = Intelligent Tire. Minimum Dual Spacing calculated without chains. + - Tread pattern varies (5 rib design). # - Exceeding the lawful speed limit is neither recommended nor endorsed. Overall widths will change 0.1 inch (2.5 mm) for each 1/4 inch change in rim width. Minimum dual spacing should be adjusted accordingly. 315/80R22.5 tires used on 8.25" rims are restricted to a maximum of 7610 lbs at 120 psi. Continental Tire the Americas, LLC. reserves the right to change product specifications at any time without notice or obligations. Please consult rim manufacturer's load and inflation limits. Never exceed rim manufacturer's limits without permission of component manufacturer. \*Tires in the Steer axle position are also suitable for trailing axles on trucks and as all-position fitment where traction is not of paramount importance.

Whether your operation is highway, regional, urban or on/off-road, **you can trust General Tire to deliver commercial truck tires that work as hard as you do.**

GENERALTIRETRUCK.COM