



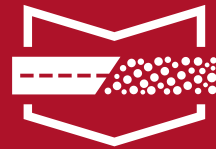
TRUST BUILT BY THE MILE.

GRABBER OD

CONSTRUCTION SERVICE, ON/OFF HIGHWAY,
DRIVE POSITION



- › SHORT DISTANCE HAULS
- › EXCELLENT TRACTION
- › TOUGH CASING
- › CONSTRUCTION SERVICE



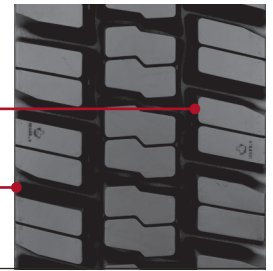
GENERAL TIRE



**CONSTRUCTION SERVICE,
ON/OFF HIGHWAY,
DRIVE POSITION**

GRABBER OD

**DEEP 30/32" SELF-CLEANING
TREAD PATTERN**
**OPEN SHOULDER PROVIDES
EXCELLENT TRACTION ON/OFF-ROAD**

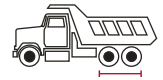


FEATURES & BENEFITS

DEEP, SELF-CLEANING TREAD PATTERN with cut-resistant compound for long wear and extended mileage.

EXCELLENT TRACTION in all weather conditions, both on and off-road.

Sidewall profile **RESISTS CURB DAMAGE**, while groove technology reduces stone retention and drilling.



TECHNICAL DATA

TIRE SIZE	LOAD RANGE	ARTICLE NUMBER	TREAD DEPTH (32NDS)	MAX. SPEED (MPH)	STATIC LOADED RADIUS		OVERALL INFLATED DIAMETER		OVERALL INFLATED WIDTH		LOADED SECTION WIDTH		APPROVED RIM(S)	MIN. DUAL SPACING		REVS PER UNIT		TIRE WEIGHT		MAX. LOAD @ INFLATION	
					IN	MM	IN	MM	IN	MM	IN	MM		IN	MM	MI	KG	LBS	KG	SINGLE LBS, PSI (KG, KPA)	DUAL LBS, PSI (KG, KPA)
11R22.5	H	05250330000	30	68	19.6	498	42.3	1074	11.1	282	12.2	310	8.25, 7.50	12.5	318	489	304	128	58	6610 / 120 (3000 / 830)	6005 / 120 (2725 / 830)
11R24.5	H	05250340000	30	68	20.6	524	44.2	1123	11.1	281	12.2	310	8.25, 7.50	12.5	318	468	291	137	62	7160 / 120 (3250 / 830)	6610 / 120 (3000 / 830)

TUBELESS TIRES ON 15 DEGREE DROP CENTER RIMS

*Note - Rim listed first is the measuring rim. Minimum Dual Spacing calculated without chains. + - Tread pattern varies (5 rib design) # - Exceeding the lawful speed limit is neither recommended nor endorsed. Overall widths will change 0.1 inch (2.5 mm) for each 1/4 inch change in rim width. Minimum dual spacing should be adjusted accordingly. 315/80R22.5 tires used on 8.25" rims are restricted to a maximum of 7610 lbs at 120 psi. Continental Tire the Americas, LLC. reserves the right to change product specifications at any time without notice or obligations. Please consult rim manufacturer's load and inflation limits. Never exceed rim manufacturer's limits without permission of component manufacturer. *Tires in the Steer axle position are also suitable for trailing axles on trucks and as all-position fitment where traction is not of paramount importance.*

Whether your operation is highway, regional, urban or on/off-road, **you can trust General Tire to deliver commercial truck tires that work as hard as you do.**

GENERALTIRETRUCK.COM