

# GENERAL RA

## REGIONAL ALL-POSITION



**NEW REGIONAL ALL-POSITION TIRE**  
A HARD WORKING TIRE DESIGNED  
WITH AN OPTIMAL BALANCE OF  
HIGH REMOVAL MILEAGE AND  
TREAD DURABILITY FOR DRIVER  
CONFIDENCE IN DEMANDING  
APPLICATIONS.

**BUILT ON  
PROVEN  
PERFORMANCE**

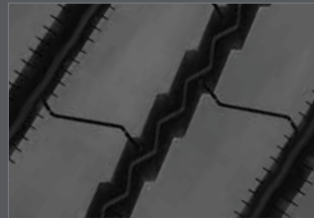
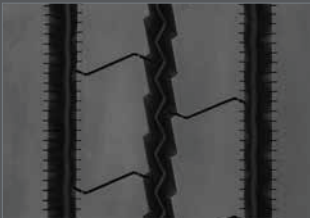


**GENERAL TIRE**

[WWW.GENERALTIRETRUCK.COM](http://WWW.GENERALTIRETRUCK.COM)

# GENERAL RA

## REGIONAL ALL-POSITION



A hard working regional, all-position tire featuring high removal mileage and even, reliable wear.

Tread compounding provides resistance to abrasion, cutting and chipping in demanding regional applications.

The General RA will deliver performance that lowers costs for your business and gives drivers confidence in demanding applications.

Tread compound balances reliable high mileage on highway with the durability needed for more severe conditions.

**APPLICATIONS:** All-position service in regional hauling, pickup and delivery, and on/off highway

TIRE SIZE	LOAD RANGE	ARTICLE NUMBER	TREAD DEPTH (32nds)	MAX. SPEED MPH #	STATIC LOADED RADIUS IN (mm)	OVERALL INFLATED DIAMETER IN (mm)	OVERALL INFLATED WIDTH IN (mm)	LOADED SECTION WIDTH IN (mm)	APPROVED RIMS	MIN. DUAL SPACING IN (mm)	REVS. PER MILE (km)	TIRE WEIGHT LB (kg)	MAX LOAD@INFLATION			
													SINGLE LB (kg)	SINGLE PSI (kPa)	DUAL LB (kg)	DUAL PSI (kPa)
TUBELESS TIRES ON 15 DEGREE DROP CENTER RIMS																
11R22.5	H	05122920000	20	75	19.3 (490)	41.4 (1052)	11.1 (281)	11.9 (302)	8.25, 7.50	12.5 (318)	500 (311)	118 (54)	6610 120 (3000 830)	6005 120 (2725 830)		
295/75R22.5	H	05122910000	20	75	18.6 (472)	40.1 (1019)	11.0 (279)	12.5 (318)	8.25, 9.00	12.5 (318)	516 (321)	113 (51)	6940 120 (3150 830)	6175 120 (2800 830)		
11R24.5	H	05122930000	20	75	20.3 (516)	43.4 (1103)	11.1 (281)	11.9 (302)	8.25, 7.50	12.5 (318)	477 (296)	128 (58)	7160 120 (3250 830)	6610 120 (3000 830)		
285/75R24.5	H	05122940000	20	75	19.3 (490)	41.3 (1049)	10.8 (274)	12.0 (305)	8.25	12.5 (318)	501 (311)	118 (53)	6780 120 (3075 830)	6175 120 (2800 830)		

Note - Rim listed first is the measuring rim. Minimum Dual Spacing calculated without chains. # - Exceeding the lawful speed limit is neither recommended nor endorsed. Overall widths will change 0.1 inch (2.5 mm) for each 1/4 inch change in rim width. Minimum dual spacing should be adjusted accordingly. Continental Tire the Americas, LLC. reserves the right to change product specifications at any time without notice or obligations. Please consult rim manufacturers load and inflation limits. Never exceed rim manufacturers limits without permission of component manufacturer.