



ON/OFF-ROAD APPLICATION



GRABBER OA (WIDE BASE)

**CONSTRUCTION SERVICE, ON/OFF HIGHWAY,
ALL-POSITION WIDE BASE**

FOR MORE THAN 100 YEARS

General Tire offers robust and reliable truck tires that cover Highway, Regional, Urban and On/Off-Road applications for commercial vehicles. Whatever your application, you can trust General Tire to have your back.



GENERAL TIRE

GENERAL TIRE. SINCE 1915

WWW.GENERALTIRETRUCK.COM

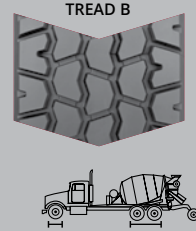
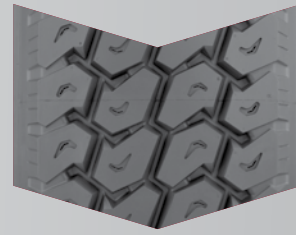


ON/OFF-ROAD APPLICATION



GRABBER OA (WIDE BASE)

CONSTRUCTION SERVICE, ON/OFF HIGHWAY, ALL-POSITION WIDE BASE



FEATURES & BENEFITS

- ▶ Reduced damage from curbing, cuts and abrasions means you can be confident either on or off the highway.
- ▶ Aggressive multi-service, all-position tread pattern provides excellent traction in on/off-road service.
- ▶ Thick under-tread resists casing penetration and damage, allowing for multiple retreads.

TECHNICAL DATA

| Tire Size | Load Range | Article Number | Tread Depth 32nds | Max Speed MPH | Static Loaded Radius IN (MM) | Overall Inflated Diameter IN (MM) | Overall Inflated Width IN (MM) | Loaded Section Width IN (MM) | Approved Rim(s) | Minimum Dual Spacing IN (MM) | Revs Per Unit MI (KM) | Tire Weight Lb (KG) | Single Max. Load @ Inflation Lb PSI (KG, KPa) | Dual Max. Load @ Inflation Lb PSI (KG, KPa) |
|--------------------------|------------|----------------|---------------------|-----------------|---------------------------------|--------------------------------------|-----------------------------------|---------------------------------|------------------------|---------------------------------|--------------------------|------------------------|--|--|
| 385/65R22.5 | L | 05350140000 | 21 | 68 | 19.5 (495) | 42.4 (1077) | 15.3 (389) | 16.1 (409) | 11.75, 12.25 | N/A | 488 (303) | 162 (73) | 9920 / 130 (4500 / 900) | N/A |
| 425/65R22.5 | L | 05350120000 | 21 | 68 | 20.2 (514) | 44.3 (1124) | 16.6 (422) | 18.0 (457) | 13.00, 12.25, 14.00 | N/A | 468 (291) | 180 (81) | 11,400 / 120 (5150 / 830) | N/A |
| 445/65R22.5 (Tread B) | L | 05350130000 | 21 | 68 | 20.8 (528) | 45.1 (1145) | 17.4 (441) | 18.6 (472) | 13.00, 14.00 | N/A | 459 (285) | 198 (90) | 12,800 / 130 (5800 / 900) | N/A |

TUBELESS TIRES ON 15 DEGREE DROP CENTER RIMS

Note - Rim listed first is the measuring rim. Minimum Dual Spacing calculated without chains. + - Tread pattern varies (5 rib design) # - Exceeding the lawful speed limit is neither recommended nor endorsed. Overall widths will change 0.1 inch (2.5 mm) for each 1/4 inch change in rim width. Minimum dual spacing should be adjusted accordingly. 315/80R22.5 tires used on 8.25" rims are restricted to a maximum of 7610 lbs at 120 psi. Continental Tire the Americas, LLC. reserves the right to change product specifications at any time without notice or obligations. Please consult rim manufacturers load and inflation limits. Never exceed rim manufacturers limits without permission of component manufacturer.

