



**REGIONAL/URBAN APPLICATION**



# GENERAL WT

**WASTE TRANSPORTATION AND OTHER  
HIGH SCRUB, URBAN APPLICATIONS**

## **FOR MORE THAN 100 YEARS**

General Tire offers robust and reliable truck tires that cover Highway, Regional, Urban and On/Off-Road applications for commercial vehicles. Whatever your application, you can trust General Tire to have your back.

**GENERAL TIRE. SINCE 1915**



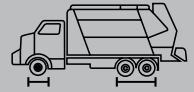
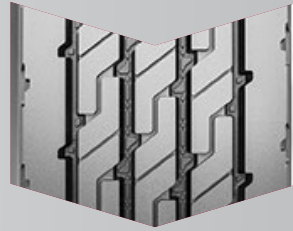
**GENERAL TIRE**

[WWW.GENERALTIRETRUCK.COM](http://WWW.GENERALTIRETRUCK.COM)



# GENERAL WT

WASTE TRANSPORTATION AND OTHER HIGH SCRUB, URBAN APPLICATIONS



## FEATURES & BENEFITS

- ▶ Advanced tread compound balances cut and tear resistance with optimized mileage specifically for the waste transport industry.
- ▶ Bead construction engineered to withstand high brake temperatures, providing structural durability and extended product life.
- ▶ Innovative groove technology leads to minimum stone retention, extending casing life.

## TECHNICAL DATA

Tire Size	Load Range	Article Number	Tread Depth   32nds	Max Speed   MPH	Static Loaded Radius IN (MM)	Overall Inflated Diameter IN (MM)	Overall Inflated Width IN (MM)	Loaded Section Width IN (MM)	Approved Rim(s)	Minimum Dual Spacing IN (MM)	Revs Per Unit MI (KM)	Tire Weight LB (KG)	Single Max. Load @ Inflation LB PSI (KG, KPa)	Dual Max. Load @ Inflation LB PSI (KG, KPa)
315/80R22.5	L	05321170000 *05650840000*	26	68	20.1 (510)	43.0 (1093)	12.5 (316)	13.6 (345)	9.00	13.8 (351)	481 (299)	163 (74)	10,000 / 130 (4540 / 900)	9090 / 130 (4125 / 900)

TUBELESS TIRES ON 15 DEGREE DROP CENTER RIMS

Note - Rim listed first is the measuring rim. \* = Intelligent Tire. Minimum Dual Spacing calculated without chains. \* - ECE Certified # - Exceeding the lawful speed limit is neither recommended nor endorsed. Overall widths will change 0.1 inch (2.5 mm) for each 1/4 inch change in rim width. Minimum dual spacing should be adjusted accordingly. 315/80R22.5 tires used on 8.25" rims are restricted to a maximum of 7610 lbs at 120 psi. Continental Tire the Americas, LLC reserves the right to change product specifications at any time without notice or obligations. Please consult rim manufacturers load and inflation limits. Never exceed rim manufacturers limits without permission of component manufacturer. When used on an 8.25" rim, the maximum load and pressure is lower than that indicated on the sidewall.

01/2021 © Continental Tire the Americas, LLC CVT-GT-SS-WT

