



ON/OFF-ROAD APPLICATION



GRABBER OA

**CONSTRUCTION SERVICE,
ON/OFF HIGHWAY, ALL-POSITION**

FOR MORE THAN 100 YEARS

General Tire offers robust and reliable truck tires that cover Highway, Regional, Urban and On/Off-Road applications for commercial vehicles. Whatever your application, you can trust General Tire to have your back.

GENERAL TIRE. SINCE 1915

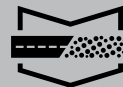


GENERAL TIRE

WWW.GENERALTIRETRUCK.COM

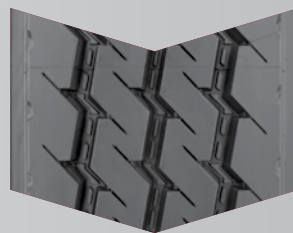


ON/OFF-ROAD APPLICATION



GRABBER OA

CONSTRUCTION SERVICE, ON/OFF HIGHWAY, ALL-POSITION



FEATURES & BENEFITS

- Designed to reduce damage from curbing, cuts and abrasions means you can be confident either on or off the highway.
- Patented innovative groove technology leads to minimum stone retention, extending casing life.
- 23/32" tread depth and cut / chip resistant tread compound deliver optimal mileage.



TECHNICAL DATA

Tire Size	Load Range	Article Number	Tread Depth 32nds	Max Speed MPH	Static Loaded Radius IN (MM)	Overall Inflated Diameter IN (MM)	Overall Inflated Width IN (MM)	Loaded Section Width IN (MM)	Approved Rim(s)	Minimum Dual Spacing IN (MM)	Revs Per Unit MI (KM)	Tire Weight Lb (KG)	Single Max. Load @ Inflation Lb PSI (KG, KPa)	Dual Max. Load @ Inflation Lb PSI (KG, KPa)
11R22.5	H	05151600000 # 05652230000 #	23	68	19.5 (495)	41.7 (1058)	11.1 (281)	12.2 (309)	8.25, 7.50	12.5 (318)	497 (309)	119 (54)	6610 / 120 (3000 / 830)	6005 / 120 (2725 / 830)
11R24.5	H	05151590000 # 05652240000 #	23	68	20.6 (523)	43.8 (1113)	11.1 (282)	12.2 (309)	8.25, 7.50	12.5 (318)	473 (294)	128 (58)	7160 / 120 (3250 / 830)	6610 / 120 (3000 / 830)
315/80R22.5 (Tread B)	L	05350150000	24	68	19.9 (505)	42.8 (1088)	12.5 (317)	14.0 (356)	9.00, 8.25	13.8 (351)	484 (301)	150 (68)	9090 / 130 (4125 / 900)	8270 / 130 (3750 / 900)

TUBELESS TIRES ON 15 DEGREE DROP CENTER RIMS

Note - Rim listed first is the measuring rim. # = Intelligent Tire. Minimum Dual Spacing calculated without chains. + - Tread pattern varies (5 rib design) # - Exceeding the lawful speed limit is neither recommended nor endorsed. Overall widths will change 0.1 inch (2.5 mm) for each 1/4 inch change in rim width. Minimum dual spacing should be adjusted accordingly. 315/80R22.5 tires used on 8.25" rims are restricted to a maximum of 7610 lbs at 120 psi. Continental Tire the Americas, LLC. reserves the right to change product specifications at any time without notice or obligations. Please consult rim manufacturers load and inflation limits. Never exceed rim manufacturers limits without permission of component manufacturer.

06/2021 © Continental Tire the Americas, LLC TT-GT-SS-GOA-MY

