

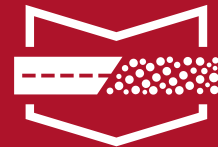


TRUST BUILT BY THE MILE.

GRABBER OA (WIDE BASE)

CONSTRUCTION SERVICE, ON/OFF HIGHWAY,
ALL-POSITION WIDE BASE

- › SHORT DISTANCE HAULS
- › EXCELLENT TRACTION
- › TOUGH CASING
- › CONSTRUCTION SERVICE



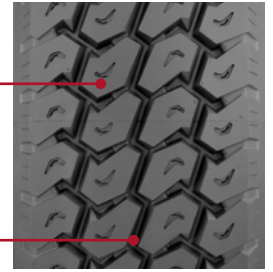
GENERAL TIRE



**CONSTRUCTION SERVICE,
ON/OFF HIGHWAY, ALL-POSITION
WIDE BASE**

TREAD PATTERN
PROVIDES
EXCELLENT
ON/OFF-ROAD
TRACTION

THICK UNDER-TREAD
GAUGE RESISTS
CASING PENETRATION



TREAD B
(SEE CHART)



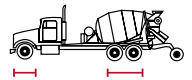
GRABBER DA (WIDE BASE)

FEATURES & BENEFITS

Designed to **REDUCE DAMAGE FROM CURBING, CUTS AND ABRASIONS** in on/off-road applications.

Aggressive multi-service, all-position tread **PATTERN PROVIDES EXCELLENT ON/OFF-ROAD TRACTION.**

Thick under-tread gauge **RESISTS CASING PENETRATION AND DAMAGE**, allowing for multiple retreads.



TECHNICAL DATA

TIRE SIZE	LOAD RANGE	ARTICLE NUMBER	TREAD DEPTH (32NDS)	MAX. SPEED (MPH)	STATIC LOADED RADIUS		OVERALL INFLATED DIAMETER		OVERALL INFLATED WIDTH		LOADED SECTION WIDTH		APPROVED RIM(S)	MIN. DUAL SPACING		REVS PER UNIT		TIRE WEIGHT		MAX. LOAD @ INFLATION	
					IN	MM	IN	MM	IN	MM	IN	MM		IN	MM	IN	MM	IN	MM	IN	MM
385/65R22.5	L	05350140000	21	68	19.5	495	42.4	1077	15.3	389	16.1	409	11.75, 12.25	N/A	N/A	488	303	162	73	9920 / 130 (4500 / 900)	N/A
425/65R22.5	L	05350120000	21	68	20.2	514	44.3	1124	16.6	422	18.0	457	13.00, 12.25, 14.00	N/A	N/A	468	291	180	81	11,400 / 120 (5150 / 830)	N/A
445/65R22.5 (TREAD B)	L	05350130000	21	68	20.8	528	45.1	1145	17.4	441	18.6	472	13.00, 14.00	N/A	N/A	459	285	198	90	12,800 / 130 (5800 / 900)	N/A

TUBELESS TIRES ON 15 DEGREE DROP CENTER RIMS

Note - Rim listed first is the measuring rim. Minimum Dual Spacing calculated without chains. + - Tread pattern varies (5 rib design) # - Exceeding the lawful speed limit is neither recommended nor endorsed. Overall widths will change 0.1 inch (2.5 mm) for each 1/4 inch change in rim width. Minimum dual spacing should be adjusted accordingly. 315/80R22.5 tires used on 8.25" rims are restricted to a maximum of 7610 lbs at 120 psi. Continental Tire the Americas, LLC. reserves the right to change product specifications at any time without notice or obligations. Please consult rim manufacturer's load and inflation limits. Never exceed rim manufacturer's limits without permission of component manufacturer. *Tires in the Steer axle position are also suitable for trailing axles on trucks and as all-position fitment where traction is not of paramount importance.

Whether your operation is highway, regional, urban or on/off-road, **you can trust General Tire to deliver commercial truck tires that work as hard as you do.**

GENERALTIRETRUCK.COM