



TRUST BUILT BY THE MILE.

# GRABBER OA

CONSTRUCTION SERVICE, ON/OFF HIGHWAY,  
ALL-POSITION



- › SHORT DISTANCE HAULS
- › EXCELLENT TRACTION
- › TOUGH CASING
- › CONSTRUCTION SERVICE

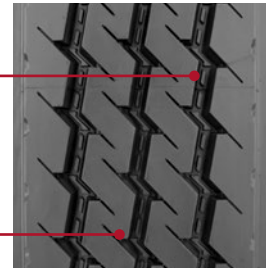


**GENERAL TIRE**



23/32" TREAD DEPTH FOR OPTIMAL MILEAGE

GROOVE TECHNOLOGY LEADS TO MINIMAL STONE RETENTION



TREAD B (SEE CHART)



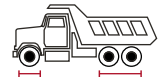
# CONSTRUCTION SERVICE, ON/OFF HIGHWAY, ALL-POSITION GRABBER DA

## FEATURES & BENEFITS

Designed to **REDUCE DAMAGE FROM CURBING, CUTS AND ABRASIONS** in on/off-road applications.

**PATENTED INNOVATIVE GROOVE TECHNOLOGY** leads to minimum stone retention, extending casing life.

23/32" tread depth and cut / chip resistant tread compound deliver **OPTIMAL MILEAGE**.



## TECHNICAL DATA

TIRE SIZE	LOAD RANGE	ARTICLE NUMBER	TREAD DEPTH (32NDS)	MAX. SPEED (MPH)	STATIC LOADED RADIUS		OVERALL INFLATED DIAMETER		OVERALL INFLATED WIDTH		LOADED SECTION WIDTH		APPROVED RIM(S)	MIN. DUAL SPACING		REVS PER UNIT		TIRE WEIGHT		MAX. LOAD @ INFLATION	
					IN	MM	IN	MM	IN	MM	IN	MM		IN	MM	IN	MM	IN	MM	IN	MM
11R22.5	H	05151600000 005652230000	23	68	19.5	495	41.7	1058	11.1	281	12.2	309	8.25, 7.50	12.5	318	497	309	119	54	6610 / 120 (3000 / 830)	6005 / 120 (2725 / 830)
11R24.5	H	05151590000 005652240000	23	68	20.6	523	43.8	1113	11.1	282	12.2	309	8.25, 7.50	12.5	318	473	294	128	58	7160 / 120 (3250 / 830)	6610 / 120 (3000 / 830)
315/80R22.5 (TREAD B)	L	05350150000	24	68	19.9	505	42.8	1088	12.5	317	14.0	356	9.00, 8.25	13.8	351	484	301	150	68	9090 / 130 (4125 / 900)	8270 / 130 (3750 / 900)

**TUBELESS TIRES ON 15 DEGREE DROP CENTER RIMS**

Note - Rim listed first is the measuring rim. ® = Intelligent Tire. Minimum Dual Spacing calculated without chains. + - Tread pattern varies (5 rib design) # - Exceeding the lawful speed limit is neither recommended nor endorsed. Overall widths will change 0.1 inch (2.5 mm) for each 1/4 inch change in rim width. Minimum dual spacing should be adjusted accordingly. 315/80R22.5 tires used on 8.25" rims are restricted to a maximum of 7610 lbs at 120 psi. Continental Tire the Americas, LLC. reserves the right to change product specifications at any time without notice or obligations. Please consult rim manufacturer's load and inflation limits. Never exceed rim manufacturer's limits without permission of component manufacturer. \*Tires in the Steer axle position are also suitable for trailing axles on trucks and as all-position fitment where traction is not of paramount importance.

Whether your operation is highway, regional, urban or on/off-road, **you can trust General Tire to deliver commercial truck tires that work as hard as you do.**

[GENERALTIRETRUCK.COM](http://GENERALTIRETRUCK.COM)