



TRUST BUILT BY THE MILE.

GENERAL HD 2

LONG HAUL, HIGHWAY TANDEM DRIVE AXLE



- › LONG DISTANCE HAULS
- › MANY MILES TO REMOVAL
- › FUEL-EFFICIENT
- › COMFORTABLE RIDE



GENERALTIRE



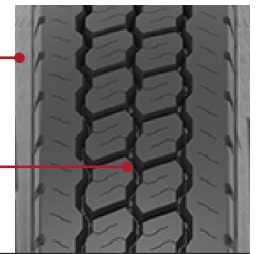
Smartway® Verified

LONG HAUL,
HIGHWAY TANDEM DRIVE AXLE

GENERAL HD 2

CLOSED SHOULDER DESIGN PROVIDES
EVEN WEAR

LOW ROLLING RESISTANCE FOR
MAXIMIZED FUEL EFFICIENCY



FEATURES & BENEFITS

New advanced tread compound provides improved mileage and durability.*

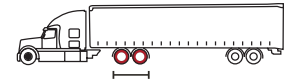
Low rolling resistance for great maximized fuel economy. Smartway verified.

28/32nds tread depth for extended tire life.

Closed shoulder tread design provides even tread wear and enhanced wet traction.

Patented innovative groove technology leads to minimum stone retention, extending casing life.

*Improvement versus predecessor General HD.



TECHNICAL DATA: GENERAL HD 2

TIRE SIZE	LOAD RANGE	ARTICLE NUMBER	TREAD DEPTH (32NDS)	MAX. SPEED (MPH)	STATIC LOADED RADIUS		OVERALL INFLATED DIAMETER		OVERALL INFLATED WIDTH		LOADED SECTION WIDTH		APPROVED RIM(S)	MIN. DUAL SPACING		REVS PER UNIT		TIRE WEIGHT		MAX. LOAD @ INFLATION			
					IN	MM	IN	MM	IN	MM	IN	MM		IN	MM	IN	MM	MI	KM	LBS	KG	SINGLE LBS, PSI (KG, KPa)	DUAL LBS, PSI (KG, KPa)
11R22.5	G	05211770000 05653500000	28	75	19.6	498	42.0	1067	11.1	282	12.1	307	8.25, 7.50	12.5	318	493	306	123	56	6175 / 105 2800 / 720	5840 / 105 2650 / 720		
295/75R22.5	G	05211790000 05653520000	28	75	18.9	481	40.7	1034	11.0	279	12.0	304	8.25, 9.00	12.5	318	509	316	115	52	6175 / 110 (2800 / 760)	5675 / 110 (2575 / 760)		
11R24.5	G	05211800000 05653530000	28	75	20.6	523	44.0	1118	11.1	282	12.1	307	8.25, 7.50	12.5	318	470	292	132	60	6610 / 105 (3000 / 720)	6005 / 105 (2725 / 720)		
285/75R24.5	G	05211830000 05653550000	28	75	19.6	498	42.0	1067	10.7	272	12.1	307	8.25, 7.50	12.5	318	493	306	121	55	6175 / 110 (2800 / 760)	5675 / 110 (2575 / 760)		

TUBELESS TIRES ON 15 DEGREE DROP CENTER RIMS

■ STANDARD ARTICLE ■ INTELLIGENT ARTICLE

Note: Rim listed first is the measuring rim. Minimum Dual Spacing calculated without chains. These specifications subject to change without notice. # - Exceeding the lawful speed limit is neither recommended nor endorsed. Overall widths will change 0.1 inch (2.5 mm) for each 1/4 inch change in rim width. Minimum dual spacing should be adjusted accordingly. Continental Tire the Americas, LLC reserves the right to change product specifications at any time without notice or obligations. Please consult rim manufacturers load and inflation limits. Never exceed rim manufacturers limits without permission of component manufacturer.

GENERALTIRE.COM