



HIGHWAY APPLICATION



GENERAL HS

LONG HAUL, HIGHWAY STEER POSITION

FOR MORE THAN 100 YEARS

General Tire offers robust and reliable truck tires that cover Highway, Regional, Urban and On/Off-Road applications for commercial vehicles. Whatever your application, you can trust General Tire to have your back.

GENERAL TIRE. SINCE 1915



GENERAL TIRE

WWW.GENERALTIRETRUCK.COM

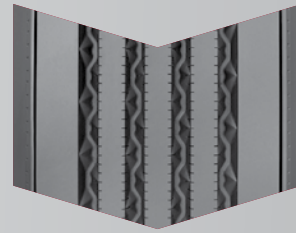


HIGHWAY APPLICATION

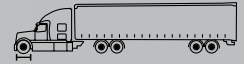


GENERAL HS

LONG HAUL, HIGHWAY STEER POSITION



Smartway Verified



FEATURES & BENEFITS

- 5-rib tread pattern promotes even wear and high removal mileage.
- Advanced pyramid-shaped stone ejection system prevents stone retention.
- Low rolling resistance compound delivers high level of fuel efficiency.
- Optimized footprint distribution contributes to even wear and higher removal mileage.
- Enhanced bead to belt package increases casing durability for maximum retreadability.



TECHNICAL DATA

Tire Size	Load Range	Article Number	Tread Depth 32nds	Max Speed MPH	Static Loaded Radius IN (MM)	Overall Inflated Diameter IN (MM)	Overall Inflated Width IN (MM)	Loaded Section Width IN (MM)	Approved Rim(s)	Minimum Dual Spacing IN (MM)	Revs Per Unit MI (KM)	Tire Weight Lb (KG)	Single Max. Load @ Inflation Lb PSI (KG, KPa)	Dual Max. Load @ Inflation Lb PSI (KG, KPa)
11R22.5	H	05111220000	18	75	19.4 (493)	41.3 (1049)	11.0 (279)	12.2 (310)	8.25, 7.50	12.5 (318)	500 (311)	116 (53)	6610 / 120 (3000 / 830)	6005 / 120 (2725 / 830)
295/75R22.5	H	05111250000	18	75	18.7 (475)	40.1 (1019)	11.0 (279)	12.2 (310)	8.25, 9.00	12.5 (318)	516 (321)	106 (51)	6940 / 120 (3150 / 830)	6175 / 120 (2800 / 830)
11R24.5	H	05111230000	18	75	20.4 (518)	43.4 (1102)	11.0 (279)	12.2 (310)	8.25, 7.50	12.5 (318)	477 (296)	122 (56)	7160 / 120 (3250 / 830)	6610 / 120 (3000 / 830)
285/75R24.5	H	05111240000	18	75	19.3 (490)	41.3 (1050)	11.2 (285)	12.0 (305)	8.25	12.5 (318)	501 (311)	112 (51)	6780 / 120 (3075 / 830)	6175 / 120 (2800 / 830)

TUBELESS TIRES ON 15 DEGREE DROP CENTER RIMS

Minimum Dual Spacing calculated without chains. # - Exceeding the lawful speed limit is neither recommended nor endorsed. Overall widths will change 0.1 inch (2.5 mm) for each 1/4 inch change in rim width. Minimum dual spacing should be adjusted accordingly. Continental Tire the Americas, LLC. reserves the right to change product specifications at any time without notice or obligations. Please consult rim manufacturers load and inflation limits. Never exceed rim manufacturers limits without permission of component manufacturer.

06/2021 © Continental Tire the Americas, LLC TT-GT-SS-HS-MY

