



TRUST BUILT BY THE MILE.

GENERAL HS 2

LONG HAUL, HIGHWAY STEER POSITION



- › LONG DISTANCE HAULS
- › MANY MILES TO REMOVAL
- › FUEL-EFFICIENT
- › COMFORTABLE RIDE



GENERAL TIRE



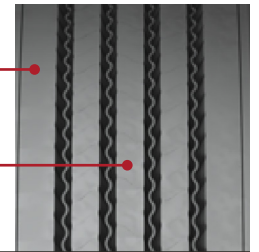
Smartway® Verified

LONG HAUL,
HIGHWAY STEER POSITION

GENERAL HS 2

NEW TREAD FOOTPRINT DELIVERS SIGNIFICANT WEAR IMPROVEMENT. 50% BETTER MILEAGE *

ADVANCED TREAD COMPOUND PROVIDES LOW ROLLING RESISTANCE FOR OPTIMAL FUEL EFFICIENCY



FEATURES & BENEFITS

Technologically advanced tread compound contributes to low rolling resistance for **optimum fuel efficiency**. Smartway verified.

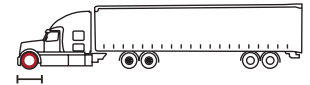
Improved footprint delivers significant wear improvements for increased removal miles. **More than 50% mileage improvement.***

Shoulder and decoupler groove modifications add **enhanced durability for resistance to cuts and tears**.

Casing platform delivers **optimal performance & maximum retreadability**.

Enhanced bead to belt package increases casing durability for **maximum retreadability**.

*Improvement versus predecessor General HS.



TECHNICAL DATA: GENERAL HS 2

| TIRE SIZE | LOAD RANGE | ARTICLE NUMBER | TREAD DEPTH (32NDS) | MAX. SPEED (MPH) | STATIC LOADED RADIUS | | OVERALL INFLATED DIAMETER | | OVERALL INFLATED WIDTH | | LOADED SECTION WIDTH | APPROVED RIM(S) | MIN. DUAL SPACING | | REVS PER UNIT | | TIRE WEIGHT | | MAX. LOAD @ INFLATION | | |
|-------------|------------|----------------------------|---------------------|------------------|----------------------|-----|---------------------------|------|------------------------|-----|----------------------|-----------------|--------------------|------|---------------|-----|-------------|-----|-----------------------|-------------------------|---------------------------|
| | | | | | IN | MM | IN | MM | IN | MM | | | IN | MM | IN | MM | MI | KM | LBS | KG | SINGLE LBS, PSI (KG, KPa) |
| 11R22.5 | H | 05112020000 05653890000 | 19 | 75 | 19.5 | 495 | 41.5 | 1054 | 11.2 | 283 | 12.2 | 309 | 8.25, 7.50 | 12.5 | 318 | 499 | 310 | 118 | 53 | 6610 / 120 (3000 / 830) | 6005 / 120 (2725 / 830) |
| 295/75R22.5 | H | 05112030000 05653900000 | 19 | 75 | 18.8 | 477 | 40.3 | 1024 | 11.2 | 284 | 12.2 | 310 | 8.25, 9.00 | 12.5 | 318 | 514 | 319 | 115 | 52 | 7160 / 123 (3250 / 850) | 6610 / 123 (3000 / 850) |
| 11R24.5 | H | 05112040000 05653910000 | 19 | 75 | 20.4 | 518 | 43.5 | 1105 | 11.2 | 285 | 12.3 | 320 | 8.25, 7.50 | 12.5 | 318 | 476 | 296 | 126 | 57 | 7160 / 120 (3250 / 830) | 6610 / 120 (3000 / 830) |
| 285/75R24.5 | H | 05112050000 05653920000 | 19 | 75 | 19.5 | 495 | 41.5 | 1055 | 10.9 | 276 | 12.0 | 305 | 8.25, 7.50 9.00 | 12.5 | 318 | 498 | 310 | 119 | 54 | 6780 / 120 (3075 / 830) | 6175 / 120 (2800 / 830) |

TUBELESS TIRES ON 15 DEGREE DROP CENTER RIMS

■ STANDARD ARTICLE ■ INTELLIGENT ARTICLE

Note: Rim listed first is the measuring rim. Minimum Dual Spacing calculated without chains. These specifications subject to change without notice. # - Exceeding the lawful speed limit is neither recommended nor endorsed. Overall widths will change 0.1 inch (2.5 mm) for each 1/4 inch change in rim width. Minimum dual spacing should be adjusted accordingly. Continental Tire the Americas, LLC reserves the right to change product specifications at any time without notice or obligations. Please consult rim manufacturers load and inflation limits. Never exceed rim manufacturers limits without permission of component manufacturer.

GENERALTIRE.COM