



TRUST BUILT BY THE MILE.

# GENERAL HT+

LONG HAUL, FUEL-EFFICIENT TRAILER TIRE



- › LONG DISTANCE HAULS
- › MANY MILES TO REMOVAL
- › FUEL-EFFICIENT
- › COMFORTABLE RIDE



**GENERAL TIRE**



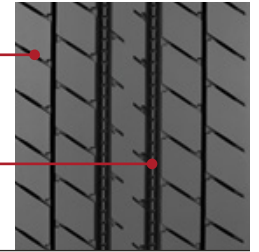
Smartway® Verified

LONG HAUL,  
FUEL-EFFICIENT TRAILER TIRE

# GENERAL HT+

20% MILEAGE IMPROVEMENT\*  
DUE TO ADVANCED COMPOUND

ULTRA LOW ROLLING RESISTANCE PROVIDES  
MAXIMUM FUEL EFFICIENCY



## FEATURES & BENEFITS

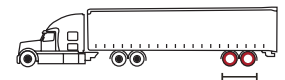
Advanced tread compound delivers **20% mileage improvement**.\*

Ultra low rolling resistance, Smartway verified.

Improved compounds with superior tear resistance for **15% more cut/chip/chunk resistance**.\*

\*Improvement versus predecessor General HT.

Self-cleaning tread design and groove geometry **prevents stone trapping** for extended casing life. Superior bead and belt package for casing durability and **maximum retreadability**.



## TECHNICAL DATA

TIRE SIZE	LOAD RANGE	ARTICLE NUMBER	TREAD DEPTH (32NDS)	MAX. SPEED (MPH)	STATIC LOADED RADIUS		OVERALL INFLATED DIAMETER		OVERALL INFLATED WIDTH		LOADED SECTION WIDTH		APPROVED RIM(S)	MIN. DUAL SPACING		REVS PER UNIT		TIRE WEIGHT		MAX. LOAD @ INFLATION	
					IN	MM	IN	MM	IN	MM	IN	MM		IN	MM	IN	MM	MI	KM	LBS	KG
11R22.5	G	05310670000 05653700000	13	75	19.3	490	41.1	1044	11.1	282	12.2	310	8.25, 7.50	12.5	318	504	313	107	49	6175 / 105 (2800 / 720)	5840 / 105 (2650 / 720)
295/75R22.5	G	05310690000 05653720000	13	75	18.5	470	39.8	1011	10.9	277	12.0	305	8.25, 9.00	12.5	318	520	323	100	45	6175 / 110 (2800 / 760)	5675 / 110 (2800 / 760)
11R24.5	G	05310700000 05653730000	13	75	20.2	513	43.0	1092	11.1	282	12.2	310	8.25, 7.50	12.5	318	481	299	114	52	6610 / 105 (3000 / 720)	6005 / 105 (2725 / 720)
285/75R24.5	G	05310710000 05653740000	13	75	19.1	485	41.1	1044	10.9	277	12.0	305	8.25, 7.50, 9.00	12.5	318	504	313	104	47	6175 / 110 (2800 / 760)	5675 / 110 (2575 / 760)
255/70R22.5	H	05310680000 05653710000	18	75	16.5	420	36.6	930	9.9	251	10.3	262	6.75, 7.50, 8.25	11.3	287	566	351	90	41	5510 / 120 (2500 / 830)	5070 / 120 (2300 / 830)

TUBELESS TIRES ON 15 DEGREE DROP CENTER RIMS

■ STANDARD ARTICLE

■ INTELLIGENT ARTICLE

Note: Rim listed first is the measuring rim. Minimum Dual Spacing calculated without chains. These specifications subject to change without notice. # - Exceeding the lawful speed limit is neither recommended nor endorsed. Overall widths will change 0.1 inch (2.5 mm) for each 1/4 inch change in rim width. Minimum dual spacing should be adjusted accordingly. Continental Tire the Americas, LLC reserves the right to change product specifications at any time without notice or obligations. Please consult rim manufacturers load and inflation limits. Never exceed rim manufacturers limits without permission of component manufacturer.

GENERALTIRE.COM