



REGIONAL/URBAN APPLICATION



GENERAL RA

**ALL-POSITION SERVICE IN REGIONAL
HAULING, PICK-UP & DELIVERY,
AND ON/OFF HIGHWAY**

FOR MORE THAN 100 YEARS

General Tire offers robust and reliable truck tires that cover Highway, Regional, Urban and On/Off-Road applications for commercial vehicles. Whatever your application, you can trust General Tire to have your back.



GENERAL TIRE

GENERAL TIRE. SINCE 1915

WWW.GENERALTIRETRUCK.COM

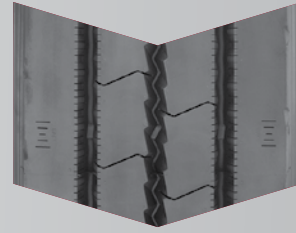


REGIONAL/URBAN APPLICATION

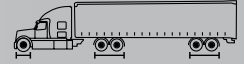


GENERAL RA

ALL-POSITION SERVICE IN REGIONAL HAULING, PICK-UP & DELIVERY, AND ON/OFF HIGHWAY



Smartway Verified



FEATURES & BENEFITS

- ▶ A hard-working regional, all-position tire featuring high removal mileage and even, reliable wear.
- ▶ Tread compounding provides resistance to abrasion, cutting and chipping in demanding regional applications.
- ▶ The General RA will deliver performance that lowers costs for your business and gives drivers confidence in demanding applications.



TECHNICAL DATA

| Tire Size | Load Range | Article Number | Tread Depth 32nds | Max Speed MPH | Static Loaded Radius IN (MM) | Overall Inflated Diameter IN (MM) | Overall Inflated Width IN (MM) | Loaded Section Width IN (MM) | Approved Rim(s) | Minimum Dual Spacing IN (MM) | Revs Per Unit MI (KM) | Tire Weight Lb (KG) | Single Max. Load @ Inflation Lb PSI (KG, KPa) | Dual Max. Load @ Inflation Lb PSI (KG, KPa) |
|-------------|------------|------------------------------|---------------------|-----------------|---------------------------------|--------------------------------------|-----------------------------------|---------------------------------|-----------------|---------------------------------|--------------------------|------------------------|--|--|
| 11R22.5 | H | 05122920000 #05650950000# | 20 | 75 | 19.3 (490) | 41.4 (1052) | 11.1 (281) | 11.9 (302) | 8.25, 7.50 | 12.5 (318) | 500 (311) | 114 (52) | 6610 / 120 (3000 / 830) | 6005 / 120 (2725 / 830) |
| 295/75R22.5 | H | 05122910000 #05651120000# | 20 | 75 | 18.6 (472) | 40.1 (1019) | 11.0 (279) | 12.5 (318) | 8.25, 9.00 | 12.5 (318) | 516 (321) | 109 (49) | 6940 / 120 (3150 / 830) | 6175 / 120 (2800 / 830) |
| 11R24.5 | H | 05122930000 #05651130000# | 20 | 75 | 20.3 (516) | 43.4 (1103) | 11.1 (281) | 11.9 (302) | 8.25, 7.50 | 12.5 (318) | 477 (296) | 123 (56) | 7160 / 120 (3250 / 830) | 6610 / 120 (3000 / 830) |
| 285/75R24.5 | H | 05122940000 | 20 | 75 | 19.3 (490) | 41.3 (1049) | 10.8 (274) | 12.0 (305) | 8.25 | 12.5 (318) | 501 (311) | 114 (52) | 6780 / 120 (3075 / 830) | 6175 / 120 (2800 / 830) |

TUBELESS TIRES ON 15 DEGREE DROP CENTER RIMS

Note - Rim listed first is the measuring rim. # = Intelligent Tire. Minimum Dual Spacing calculated without chains. # - Exceeding the lawful speed limit is neither recommended nor endorsed. Overall widths will change 0.1 inch (2.5 mm) for each 1/4 inch change in rim width. Minimum dual spacing should be adjusted accordingly. Continental Tire the Americas, LLC. reserves the right to change product specifications at any time without notice or obligations. Please consult rim manufacturers load and inflation limits. Never exceed rim manufacturers limits without permission of component manufacturer.

