



TRUST BUILT BY THE MILE.

# GENERAL RA

ALL-POSITION SERVICE IN REGIONAL HAULING,  
PICK-UP & DELIVERY, AND ON/OFF HIGHWAY

- › LONG & SHORT DISTANCE HAULS
- › GREAT HANDLING
- › DURABLE TREAD COMPOUNDS



**GENERAL TIRE**

GENERAL TIRE. SINCE 1915

GENERALTIRETRUCK.COM



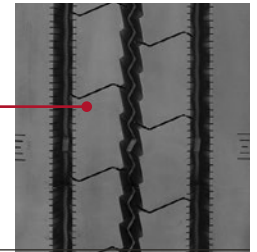
ALL-POSITION SERVICE  
IN REGIONAL HAULING,  
PICK-UP & DELIVERY,  
AND ON/OFF HIGHWAY

# GENERAL RA



SMARTWAY VERIFIED

TREAD COMPOUNDING PROVIDES  
RESISTANCE TO ABRASION,  
CUTTING AND CHIPPING

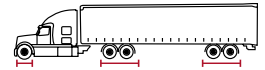


## FEATURES & BENEFITS

A hard-working regional, all-position tire featuring **HIGH REMOVAL MILEAGE AND EVEN, RELIABLE WEAR.**

**TREAD COMPOUNDING** provides resistance to abrasion, cutting and chipping in demanding regional applications.

The General RA will deliver **PERFORMANCE THAT LOWERS COSTS** for your business and gives drivers confidence in demanding applications.



## TECHNICAL DATA

TIRE SIZE	LOAD RANGE	ARTICLE NUMBER	TREAD DEPTH (32NDS)	MAX. SPEED (MPH)	STATIC LOADED RADIUS		OVERALL INFLATED DIAMETER		OVERALL INFLATED WIDTH		LOADED SECTION WIDTH		APPROVED RIM(S)	MIN. DUAL SPACING		REVS PER UNIT		TIRE WEIGHT		MAX. LOAD @ INFLATION	
					IN	MM	IN	MM	IN	MM	IN	MM		IN	MM	IN	MM	IN	MM	SINGLE LBS, PSI (KG, KPA)	DUAL LBS, PSI (KG, KPA)
11R22.5	H	05122920000 #05650950000	20	75	19.3	490	41.4	1052	11.1	281	11.9	302	8.25, 7.50	12.5	318	500	311	114	52	6610 / 120 (3000 / 830)	6005 / 120 (2725 / 830)
295/75R22.5	H	05122910000 #05651120000	20	75	18.6	472	40.1	1019	11.0	279	12.5	318	8.25, 9.00	12.5	318	516	321	109	49	6940 / 120 (3150 / 830)	6175 / 120 (2800 / 830)
11R24.5	H	05122930000 #05651130000	20	75	20.3	516	43.4	1103	11.1	281	11.9	302	8.25, 7.50	12.5	318	477	296	123	56	7160 / 120 (3250 / 830)	6610 / 120 (3000 / 830)
285/75R24.5	H	05122940000	20	75	19.3	490	41.3	1049	10.8	274	12.0	305	8.25	12.5	318	501	311	114	52	6780 / 120 (3075 / 830)	6175 / 120 (2800 / 830)

**TUBELESS TIRES ON 15 DEGREE DROP CENTER RIMS**

Note - Rim listed first is the measuring rim. # = Intelligent Tire. Minimum Dual Spacing calculated without chains. # - Exceeding the lawful speed limit is neither recommended nor endorsed. Overall widths will change 0.1 inch (2.5 mm) for each 1/4 inch change in rim width. Minimum dual spacing should be adjusted accordingly. Continental Tire the Americas, LLC. reserves the right to change product specifications at any time without notice or obligations. Please consult rim manufacturer's load and inflation limits. Never exceed rim manufacturer's limits without permission of component manufacturer.

Whether your operation is highway, regional, urban or on/off-road, **you can trust General Tire to deliver commercial truck tires that work as hard as you do.**

[GENERALTIRETRUCK.COM](http://GENERALTIRETRUCK.COM)