



TRUST BUILT BY THE MILE.

GENERAL RA

ALL-POSITION SERVICE IN REGIONAL HAULING,
PICK-UP & DELIVERY, AND ON-/OFF-HIGHWAY

- › GREAT HANDLING
- › DURABLE TREAD COMPOUNDS



GENERALTIRE

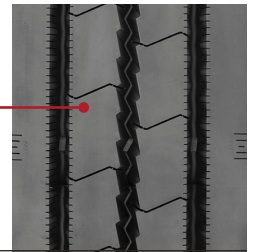


Smartway® Verified

**ALL-POSITION SERVICE
IN REGIONAL HAULING, PICK-UP &
DELIVERY, AND ON-/OFF-HIGHWAY**

GENERAL RA

TREAD COMPOUNDING PROVIDES RESISTANCE
TO ABRASION, CUTTING AND CHIPPING

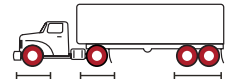


FEATURES & BENEFITS

A hard-working regional, all-position tire featuring **high removal mileage and even, reliable wear.**

Tread compounding provides resistance to abrasion, cutting and chipping in demanding regional applications while achieving Smartway verification.

The General RA will deliver **performance that lowers costs** for your business and gives drivers confidence in demanding applications.



TECHNICAL DATA: GENERAL RA

TIRE SIZE	LOAD RANGE	ARTICLE NUMBER	TREAD DEPTH (32NDS)	MAX. SPEED (MPH)	STATIC LOADED RADIUS		OVERALL INFLATED DIAMETER		OVERALL INFLATED WIDTH		LOADED SECTION WIDTH	APPROVED RIM(S)	MIN. DUAL SPACING		REVS PER UNIT		TIRE WEIGHT		MAX. LOAD @ INFLATION		
					IN	MM	IN	MM	IN	MM			IN	MM	IN	MM	MI	KM	LBS	KG	SINGLE LBS, PSI (KG, KPa)
11R22.5	H	05122920000 05650950000	20	75	19.3	490	41.4	1052	11.1	281	11.9	302	8.25, 7.50	12.5	318	500	311	114	52	6610 / 120 (3000 / 830)	6005 / 120 (2725 / 830)
295/75R22.5	H	05129380000 05656120000	20	75	18.9	479	40.1	1019	11.3	287	13.3	338	8.25, 9.00	12.9	327	516	321	112	51	7160 / 123 (3250 / 850)	6610 / 123 (3000 / 850)
11R24.5	H	05122930000 05651130000	20	75	20.3	516	43.4	1103	11.1	281	11.9	302	8.25, 7.50	12.5	318	477	296	123	56	7160 / 120 (3250 / 830)	6610 / 120 (3000 / 830)
285/75R24.5	H	05122940000	20	75	19.3	490	41.3	1049	10.8	274	12.0	305	8.25	12.5	318	501	311	114	52	6780 / 120 (3075 / 830)	6175 / 120 (2800 / 830)

TUBELESS TIRES ON 15 DEGREE DROP CENTER RIMS

■ STANDARD ARTICLE ■ INTELLIGENT ARTICLE

Note: Rim listed first is the measuring rim. Minimum Dual Spacing calculated without chains. These specifications subject to change without notice. # - Exceeding the lawful speed limit is neither recommended nor endorsed. Overall widths will change 0.1 inch (2.5 mm) for each 1/4 inch change in rim width. Minimum dual spacing should be adjusted accordingly. Continental Tire the Americas, LLC reserves the right to change product specifications at any time without notice or obligations. Please consult rim manufacturers load and inflation limits. Never exceed rim manufacturers limits without permission of component manufacturer.

GENERALTIRE.COM